



Nitrous Oxide/Oxygen Sedation Solutions to Suit Your Needs

Advanced Conscious Sedation Systems

The innovative portfolio of Accutron Nitrous Oxide/Oxygen Sedation equipment and accessories, includes single-use masks, scavenging systems, manifolds, flowmeter systems and associated components.



Flowmeter systems

- Central
- Portable
- Enclosed portable
- Cabinet-mounted central



Independent flow control flowmeters

- Digital
- Analog



Manifold systems

- Central
- Digital Automatic
- Analog
- Portable



Mounts

- Flushmount
- Chairside
- Cabinet mount
- Wall arms
- Universal cabinet slides
- Mobile stand

The screenshot shows the Accutron website with the following elements:

- Navigation bar: CROSSTEX logo, Accutron logo, phone number (800-531-2321), email (625-750-0444), search, login, and home icons.
- Menu: COMPANY, ABOUT N2O, PRODUCT, NEWS, CONTACT US, FIND A REP.
- Hero image: A dentist in a white coat examining a patient in a dental chair.
- Text overlay: "YOUR CHOICE NITROUS SYSTEMS" and "OUR PRODUCTS".
- Section header: "Nitrous Oxide/Oxygen Sedation Systems".
- Text: "All Accutron products are made in the U.S.A. We take pride in providing innovative, high-quality products for over 43 years. Safety for patients, clinicians, dental office staff, and installation experts is our first concern."
- Logo: "MADE IN THE USA" with an American flag icon.

For more information, please visit:

 Accutron-inc.com

Table of Contents

Central flowmeter systems.....	4
Portable flowmeter systems.....	6
Oral surgery and emergency oxygen.....	7
RFS™ Chairside Kits	8
Manifolds and outlets.....	10



Central flowmeter systems

The central system can be particularly attractive to offices where nitrous oxide is used on a regular basis and available space will accommodate a central storage area. Savings obtained over time from the use of larger G and H cylinders offset the initial investment in a central gas storage system.

Digital flowmeters



Digital Ultra™ Flushmount Flowmeter

Ref. #	Description
56600	Pkg. G, Standard Bag Tee
56800	Pkg. H, RFS™ - System D
56800-CHAIR	Pkg. H Chair, RFS™ for Chairmount Kits
56950	Pkg. I, Accu-Vac™ Vacuum Controller
54500	Remote Control for Digital Ultra™ Flowmeter

If surface mounting the Digital Ultra™ Flushmount Flowmeter, purchase 32055 - Surface Mount for Digital Ultra Flushmount Flowmeter.



Digital Ultra™ Flowmeter

Ref. #	Description
51975	Flowmeter
56200	Pkg. C, Mobile Stand
56300	Pkg. D, 9 in Arm
56400	Pkg. E, 16 in Bi-Fold Arm
56500	Pkg. F, Telescoping Arm

Analog percent check flowmeters



Ultra PC™ Flushmount Flowmeter

Ref. #	Description
36600	Pkg. G, Standard Bag Tee
36800	Pkg. H, RFS™ - System A
36800-CHAIR	Pkg. H Chair, RFS™ for Chairmount Kits



Ultra PC™ Flowmeter

Ref. #	Description
31975	Flowmeter only
36200	Pkg. C, Mobile Stand
36300	Pkg. D, 9 in Arm
36400	Pkg. E, 16 in Bi-Fold Arm
36500	Pkg. F, Telescoping Arm
36500-US	Pkg. U, Universal Cabinet Slide, PC/DC*

Independent O₂ & N₂O flow control



Ultra DC™ Flowmeter

Ref. #	Description
31980	Flowmeter only
46200	Pkg. C, Mobile Stand
46300	Pkg. D, 9 in Arm
46400	Pkg. E, 16 in Bi-Fold Arm
46500	Pkg. F, Telescoping Arm
46500-US	Pkg. U, Universal Cabinet Slide, PC/DC*

*Note: Universal Cabinet Slide, PC/DC can be installed within a cabinet to the left, right or under-mounted.

Portable flowmeter systems

Mobility is the major advantage of the portable flowmeter unit. It is usually the system of choice in offices where space limitations will not accommodate a central storage room or when frequency of utilization of nitrous oxide/oxygen sedation is low.

Traditional portables



Ultra PC™ Flowmeter

Digital Ultra™ Flowmeter

4-Cylinder Portables

Ref. #	Description
36100	Ultra PC™ Flowmeter
46100	Ultra DC™ Flowmeter
56100	Digital Ultra™ Flowmeter

2-Cylinder Portables (not pictured)

Ref. #	Description
36000	Ultra PC™ Flowmeter
46000	Ultra DC™ Flowmeter

Newport™ Flowmeter System



Newport™ Digital Flowmeter System

Newport™ Flowmeter System

An enclosed portable keeps the cylinders out of sight and makes operator turnaround (disinfection) faster and easier. The flat surface of the enclosed portable can be used as additional counter space.

4-Cylinder Enclosed Portables

Ref. #	Description
51000	Newport™ Digital Flowmeter System
50000	Newport™ Flowmeter System

Both systems utilize E cylinders

Oral surgery and emergency oxygen

Oral surgery



34014



47000

All Accutron™ Flowmeters are available as oral surgery units and, along with a scavenging system, include an oral surgery accessory package (47000). The oral surgery accessory package contains a full facemask, elbow with pop-off, directional Y valve and corrugated tube.

Ref. #	Description
56100-OS	Digital Ultra™ Oral Surgery 4-Cylinder Portable Flowmeter
34014	Surgical E-Vac Kit - Includes five 1500 ml single-use canisters, wall mount plate and mounting hardware (Requires Vacuum Outlet, 34011)
47000	Oral Surgery Accessory Package

Emergency oxygen



38011



27793



35015

Deluxe Portable Oxygen System includes:

- Demand valve resuscitator with O₂ Q/C fitting
- Adjustable liter-flow regulator
- Adult facemask
- Cylinder wrench
- Portable cart (O₂ cylinder not included)

Ref. #	Description
38013	Deluxe Portable Oxygen System
38011	Demand Valve Resuscitator
27793	Micro - O ₂ Outlet
35015	Oxygen Selector Valve

RFS™ Chairmount Kits

RFS™ Remote Flow System mounts to patient chairs without drilling new holes and can be installed in the field whether retrofitted where possible or new construction. Kits are available for a wide variety of dental chair brands. Visit accutron-inc.com to learn about our pole and cabinet mounts for RFS™ Systems for even more flexibility.

Chairmount kits for RFS™ Remote Flow System



Dentsply Sirona chair shown

Benefits

- Eliminates long mixed gas and vacuum hoses draping from adjacent cabinets, providing easier access for the doctor
- Creates uncluttered, safer work zone for doctor and staff
- Minimizes displacement of patient mask caused by drag/pull and weight of long hoses
- Store scavenging circuit and rubber goods when not in use
- Wide variety of kits available for compatibility with various chairs — see our full product catalog at accutron-inc.com for more details

RFS™ Remote Flow System Mounted at Patient Chair

Ref. #	Description
36100	Ultra PC™ Flowmeter
46100	Ultra DC™ Flowmeter
56100	Digital Ultra™ Flowmeter

Clear your work zone



Flowmeters for RFS™ Chairmount Kits

Digital



Includes RFS™ Remote Flow System Mount Mixed Gas and Vacuum Source

Benefits

- Automatic compensation to easily adjust total flow or gas ratio while the other stays constant
- Both digital and electronic flowtube displays for ease of use
- Maximum nitrous oxide ratio at 70% for patient safety
- Audible and visual alarms to notify of low oxygen
- Oxygen fail-safe and flush for additional safety
- Emergency oxygen resuscitation connector
- Sealed flush surface makes it easy to disinfect or barrier-protect
- Reliable and accurate with minimal maintenance

Digital Ultra™ Flushmount Flowmeter

Ref. #	Description
56800-CHAIR	Pkg. H (includes RFS™ System) Order Chairmount Kit separately

Analog



Includes RFS™ Remote Flow System Mount Mixed Gas and Vacuum Source

Benefits

- Single-knob total flow control
- Nitrous oxide ratio control with 70% maximum
- Oxygen fail-safe and oxygen flush
- Oxygen resuscitation connector
- Emergency air valve
- Directional check valve
- Continuous oxygen and nitrous oxide flow tubes

Ultra PC™ Cabinet Mount Flowmeter

Ref. #	Description
36800-CHAIR	Pkg. H (includes RFS™ System) Order Chairmount Kit separately

Manifolds and outlets

Choosing the right manifold is important for central systems. A digital automatic switching manifold provides peace of mind while an analog manifold can be more cost-efficient. A wide variety of micro and recessed outlets are also available to ensure the operatory is set up in the preferred configuration.

Digi-Flo™ Digital Automatic Switching Manifold/Alarm System



Benefits

- Designed to safely and precisely provide uninterrupted gas supply to the dental operator
- Easily accessible components
- System allows for dual alarm panels and up to four zone valves
- Pre-install mounting bracket allows effortless installation

Digi-Flo™ Systems

Ref. #	Description
49150	Pkg. A, Desk Alarm
49250	Pkg. B, Wall Alarm
49350	Pkg. C, Desk Alarm & Security
49450	Pkg. D, Wall Alarm & Security
49550	Zone Valve (if required)
49053	2nd Wall Alarm Pre-Install Kit
49054	2nd Wall Alarm
49054-S	2nd Wall Alarm with Security Systems
27985-FRU	Digi-Flo™ Optional Conduit Kit
27954-FRU	Matrx™ Manifold Adapter Kit

Above packages include all manifold system components as well as a pre-install kit. To order without pre-install kit, add -NP to part number.

Guardian™ Monitor Analog Manifold/Alarm Systems



Guardian Monitor™ Systems

Ref. #	Description
38002	Pkg. A, Wall Alarm (2 O ₂ + 2 N ₂ O)
38003	Pkg. B, Desk Alarm (2 O ₂ + 2 N ₂ O)
38004	Pkg. C, Wall Alarm (2 O ₂ + 1 N ₂ O)
38005	Pkg. D, Desk Alarm (2 O ₂ + 1 N ₂ O)
39550	Zone Valve (if required)

Above packages include all manifold system components as well as a pre-install kit. To order without pre-install kit, add -NP to part number.

Micro & Recessed Outlets

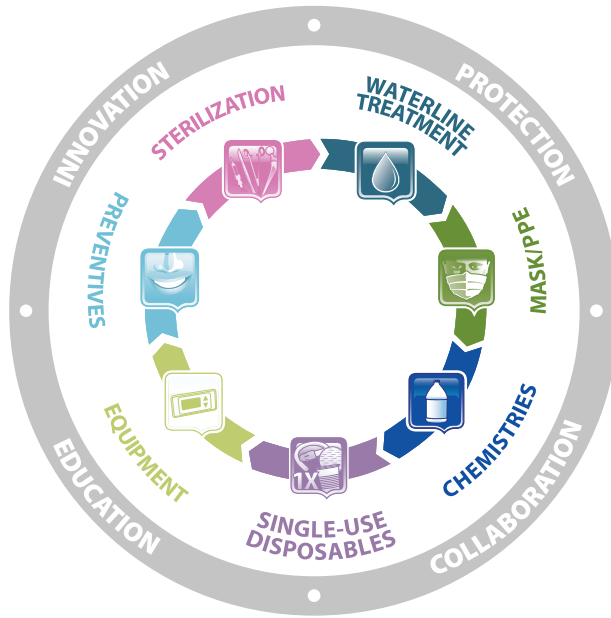


Micro Outlets

Ref. #	Description
34012-3	Triple Outlet Kit
34012-3-NS	Triple Outlet Kit without Shut Offs

Recessed Outlets

Ref. #	Description
34004	Triple Outlet
34005	Dual Outlet



Dedicated to innovative, high-quality solutions, services, and education that ensure maximum compliance and improve outcomes for healthcare professionals and patients.



All product names are trademarks of Crosstex International, Inc., a Cantel Medical Company, its affiliates or related companies, unless otherwise noted. Matrix is sold by Parker-Hannifin Corp.

© 2019 Crosstex International, Inc. 0319 DLIT00786 Rev A

(888) 276-7783

info@crosstex.com

crosstex.com

