

#whdentalwerk



video.wh.com

Now at  
your dealer  
or [wh.com](http://wh.com)



# Turbines without a dark side



syneco



**synea** VISION

The instrument range that meets the highest demands. High-end turbines with ultimate technology!

**Made in AUSTRIA**

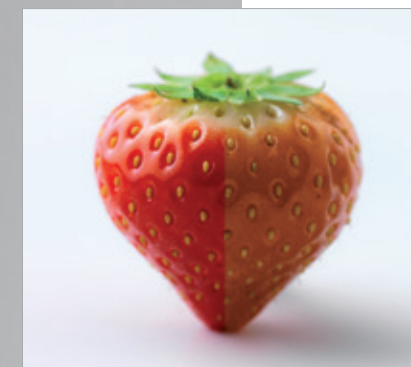


**synea** FUSION

The instrument range for maximum economy. Proven Synea quality is more accessible than ever before, whatever your budget!

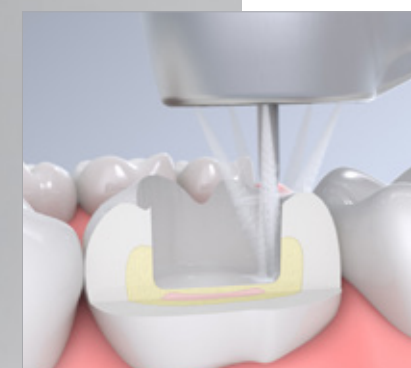
## Turbines that meet the highest demands

High-end technology for excellent preparation results: Both of the Synea turbine lines are characterised by high performance, optimal ergonomics and outstanding value for money. Synea Vision is symbolic of innovations such as the sterilizable 5x Ring LED+ and Synea Fusion promises top quality combined with unbeatable cost-efficiency.



### See better

Optimal contrast and natural illumination with maximal colour rendering with LED+.



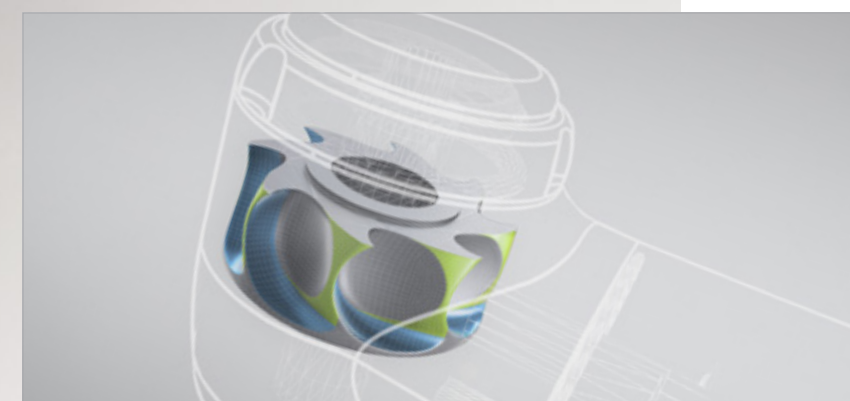
### Optimum cooling

Thanks to the 4x or 5x spray, the bur tip is optimally cooled in every application position.



### Patented hygienic head system

The circulating air in the turbine head ensures no aerosol particles are sucked into the turbine as the rotor slows down.



### Full steam ahead with the Power Blade rotor

The optimized blade geometry allows higher rotor efficiency. For maximum torque and optimal power throughout preparation.



### Ergonomic, lightweight and quiet

Relaxed, fatigue-free working with noticeably more lightweight turbine system.



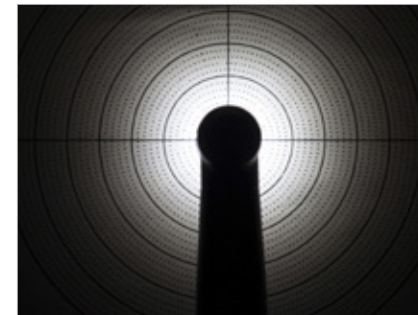
## Synea Vision:

The dream that has become reality

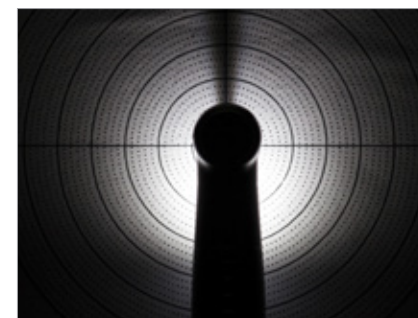
The world's first sterilizable turbine handpieces with 5x Ring LED+ not only amaze with their shadowless illumination, but prove to be turbines of the highest quality in all other respects too. Discover a completely new working experience – with absolutely no shadows.



synea VISION



**Synea Vision Ring LED+**  
Shadowless illumination of the treatment size with the unique 5x Ring LED+.

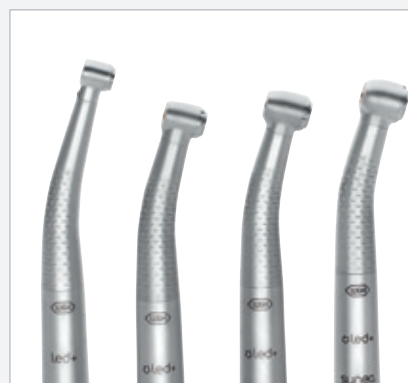


**Comfort to the power of 5!**  
Five LEDs and five spray ports revolutionise visual comfort and ease of use.

**Synea Fusion in comparison with basic LED+.**

### Further advantages at a glance

- › Outstanding ergonomics
- › Low weight
- › Best balance
- › Non-slip grip profile
- › Especially quiet rotor
- › Low-noise operation
- › Ceramic ball bearings
- › Hygienic head system
- › Long service life
- › Quality made in Austria
- › Thermo washer disinfectable and sterilizable



**Tailor-made turbines**  
The right head size for optimal access to the treatment site in every application.



**Extraordinary value retention**  
Like new every day with the special, scratch-resistant coating.

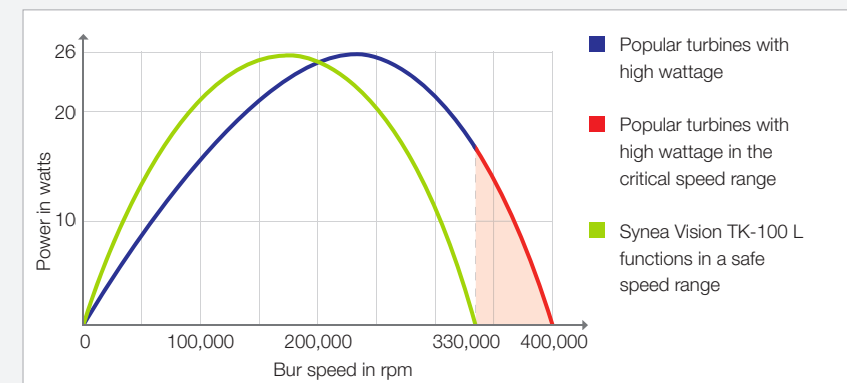
## Synea Vision:

Power turbine TK-100 L  
and microturbine TK-94 L

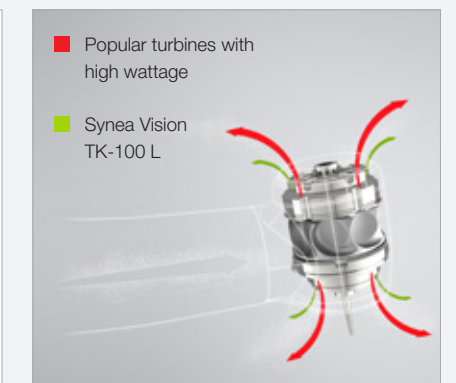
The TK-100 L is the power turbine with absolutely no shadows. It offers extra high performance without undesirable side effects such as high wear and tear or air escaping from the head of the turbine. With its extra small head, the TK-94 L is perfect for minimally invasive procedures and provides optimal access to the treatment site.



**Tiny head, great advantages**  
With a head diameter of only 9 mm and an overall head height of 17.2 mm with a 16 mm bur attached patients with a limited access, such as children and the elderly, benefit especially.



**Service life with no compromises**  
Improved performance due to optimal use of the torque without exhausting the maximum speed. This reliably ensures high power and is gentle on the rotor's ball bearings for a long time.



**Hygiene with no compromises**  
Minimal escape of air at the head maximum capacity for added efficiency and unbeatable hygiene.

User experiences



**Dr. med.dent. Martin Schiffel**  
Salzburg, Austria

»The innovative lighting concept of the W&H turbine with 5x Ring LED+ ensures full light intensity at the treatment point even under difficult conditions.«



**Dr. Sunil Hirani**  
BSc (Hons), BDS, MSc, FDSRCS (Eng),  
MOrthRCS (Eng), FDS (Orth)SmileLux,  
Milton Keynes, United Kingdom

»The Synea Vision turbine is perhaps one of the best handpieces I have ever used. This is attributed to its lightweight, excellent torque and superb ring LED+ light source especially in very difficult to see areas in the posterior part of the mouth.«



**DDR Mats Bäckström Falun**  
Sweden

»Excellent torque supports efficient removal of natural tooth substance as well as high-strength denture materials.«



Synea Vision:  
Technical data



Types with integrated ceramic ball bearings:	TK-94 L / TK-94 LM	TK-97 L / TK-97 LM	TK-98 L / TK-98 LM	TK-100 L / TK-100 LM
Light:	LED+ / compact glass rod	Ring LED+ / compact glass rod	Ring LED+ / compact glass rod	Ring LED+ / compact glass rod
CRI (LED version):	> 90	> 90	> 90	> 90
Colour temperature: (LED version):	5,500 K	5,500 K	5,500 K	5,500 K
Luminous flux (lumens):	6.0 / 4.0**	6.0 / 4.0**	6.0 / 4.0**	6.0 / 4.0**
Illuminating power:	25,000 lux	25,000 lux	25,000 lux	25,000 lux
Coupling:	1 Roto Quick 2 Multiflex****	1 Roto Quick 2 Multiflex****	1 Roto Quick 2 Multiflex****	1 Roto Quick 2 Multiflex****
Head size:	Ø 9 mm	Ø 10 mm	Ø 11,5 mm	Ø 13 mm
Head height:	17.2 mm (with bur 16 mm)	21.1 mm (with bur 19 mm)	21.4 mm (with bur 19 mm)	21.4 mm (with bur 19 mm)
Power*:	14 W	21 W	24 W	26 W
rpm (min <sup>-1</sup> ):	410,000	400,000	360,000	330,000
Rotary instruments:	FG bur, as per ISO 1797-1, with Ø 1,6 mm			
Max. operating part diameter:	1.5 mm	2 mm	2 mm	2.5 mm
Max. length:	16 mm	21 mm	25 mm	25 mm
Weight:	39 g / 67 g	38 g / 68 g	40 g / 69 g	40 g / 70 g
Roto Quick connection operating pressure:	3 ± 0,3 bar	3 ± 0,3 bar	3 ± 0,3 bar	3 ± 0,3 bar
Multiflex® connection operating pressure:	2.5 to 4 bar	2.5 bis 4 bar	2.5 bis 4 bar	2.5 bis 4 bar
Spray:	5x	5x	5x	5x
Volume:	59 dB (A)	57 dB (A)	57 dB (A)	57 dB (A)

\* Performance value applies at a rated pressure of 3 bar and exhaust air pressure of max. 0.2 bar

\*\* Values apply for use of RM-34 LED with DC power supply

\*\*\* Multiflex® is a trademark of a third party not affiliated with W&H Dentalwerk Bürmoos GmbH



**W&H Roto Quick couplings enable the versatile use of instruments with Ring LED+, LED+, LED and halogen light**

- › Click and pull
- › Continuous regulation of the spray water supply
- › Clean head system
- › Sterilizable
- › 24-month guarantee



**W&H RM-34 LED coupling for Multiflex\*\*\*\* connection**

- › Use of LED without requiring changes to an optic dental unit
- › Long LED service life
- › Continuous regulation of the spray water supply
- › Clean head system
- › 24-month guarantee



# Synea Fusion:

## Synea turbines with maximum efficiency

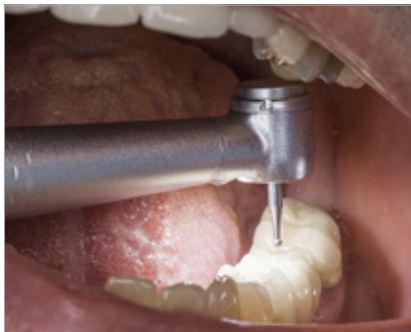
User comfort with no compromises and top performance combined with outstanding cost-efficiency: Discover the advantages of the new Synea Fusion line!

### Further advantages at a glance

- › Outstanding ergonomics
- › Low weight
- › Especially quiet rotor
- › Low-noise operation
- › Ceramic ball bearings
- › Hygienic head system
- › Long service life
- › Quality made in Austria
- › Thermo washer disinfectable and sterilizable



**Optimum cooling of four sides**  
Constant cooling and optimal cleaning of the treatment site thanks to 4x spray.



**Experience LED+**  
Excellent illumination with natural colour rendering and optimal positioning of the LED.



### The choice is yours

Choose between the two different head sizes and then select the connection which suits your coupling system. The W&H Roto Quick offers you unbeatable LED+ light and convenient 360° rotation.



# Synea Fusion:

## Technical data



Types:	TG-97 L / TG-97 L RM / TG-97 LM / TG-97 L N / TG-97	TG-98 L / TG-98 L RM / TG-98 LM / TG-98 L N / TG-98
Light:	LED + / LED + / compact glass rod / compact glass rod /–	LED + / LED + / compact glass rod / compact glass rod /–
CRI (LED version):	> 90	> 90
Colour temperature (LED version):	5,500 K	5,500 K
Luminous flux (lumens):	6.0 / 6.0 / 4.0** / depending on coupling / –	6.0 / 6.0 / 4.0** / depending on coupling / –
Illuminating power:	25,000 Lux	25,000 Lux
Coupling:	1 Roto Quick RM-connection 2 Multiflex®*** NSK Mach®***	1 Roto Quick RM-connection 2 Multiflex®*** NSK Mach®***
Head size:	Ø 10 mm	Ø 11.5 mm
Head height:	21.1 mm (with bur 19 mm)	21.4 mm (with bur 19 mm)
Power*:	18 W	21 W
rpm (min <sup>-1</sup> ):	390,000	360,000
Rotary instruments:	FG bur, as per ISO 1797-1, with Ø 1,6 mm	
Max. operating part diameter:	2 mm	2 mm
Max. length:	21 mm	25 mm
Weight:	40 g / 43g / 68 g / 52 g / 40 g	42 g / 44 g / 70 g / 53 g / 42 g
Roto Quick connection operating pressure:	3 ± 0,3 bar	3 ± 0,3 bar
Multiflex® connection operating pressure:	2.5 to 4 bar	2.5 to 4 bar
Spray outlets:	4x	4x
Volume:	59 dB (A)	59 dB (A)

\* Performance value applies at a rated pressure of 3 bar and exhaust air pressure of max. 0.2 bar  
 \*\* Values apply for use of RM-34 LED with DC power supply  
 \*\*\* Multiflex® and NSK Mach® are trademarks of third parties not affiliated with W&H Dentalwerk Bürmoos GmbH



**W&H Roto Quick couplings enable the versatile use of instruments with Ring LED+, LED+, LED and halogen light**

- › Click and pull
- › Continuous regulation of the spray water supply
- › Clean head system
- › Sterilizable
- › 24-month guarantee



**W&H RM-34 LED coupling for Multiflex®\*\*\* connection**

- › Use of LED without requiring changes to an optic dental unit
- › Long LED service life
- › Continuous regulation of the spray water supply
- › Clean head system
- › 24-month guarantee

# Hygiene & maintenance of your turbines



## W&H Technical Service

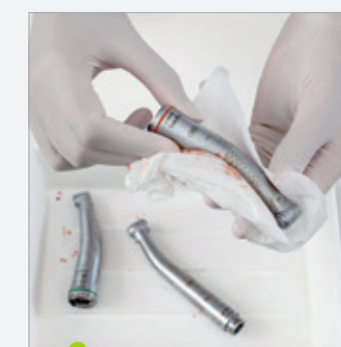
»The better the care, the longer the pleasure.«  
Regular cleaning and care of your instruments  
protects them against premature wear and  
unnecessary service costs.



You can find the exact work process for preparation of transmission instruments and motors at **wh.com**.

# Sterilization in record time

Cleaned, serviced, sterilized.  
The Assistina 3x3 cleaning process,  
in combination with the Lisa fast cycle, reduces  
the overall preparation time. You can use the  
instruments again after only 19 minutes.



0 min

## Wipe disinfection

Disinfect the instruments  
before cleaning and servicing  
by wiping them.



6 min

## Cleaning and care

The Assistina 3x3 cleans  
and services three instruments  
inside and outside in just  
6 minutes.



13 min

## Sterilization

With the Lisa fast cycle, the  
instruments can be removed  
from the sterilizer ready for  
use after only 13 minutes.



## Maintenance at the press of a button

The validation of the cleaning  
process is confirmed by expert  
opinion and can be viewed  
at [wh.com](http://wh.com).



## Assistina 3x2

The Assistina 3x2 prepares  
instruments in two stages:  
internal cleaning, lubrication.



## Assistina TWIN

First reprocessing device for dental  
instruments which is equipped with  
two process chambers that can be  
used alternately.



Pictures are for illustrative purposes only. Additional equipment and accessories shown are not included as standard.

20392 AEN Rev. 010 / 31.01.2019  
Subject to alterations

**W&H Dentalwerk Bürmoos GmbH**  
Ignaz-Glaser-Straße 53, Postfach 1  
5111 Bürmoos, **Austria**  
**t** +43 6274 6236-0  
**f** +43 6274 6236-55  
office@wh.com  
**wh.com**