



DENTAL UNIT WATERLINE
TREATMENT SOLUTIONS
ICX[®] & ICXRestore[™]





Waterline maintenance: Why does it matter?

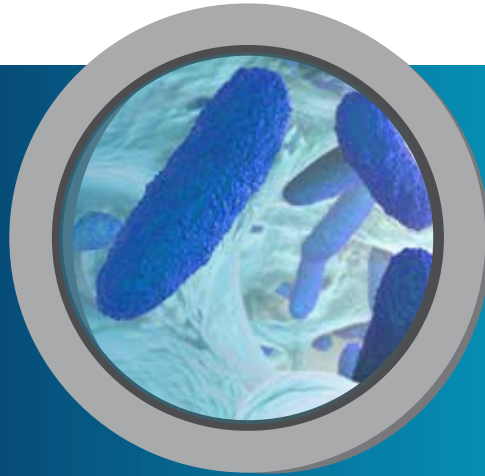
Patients trust that the water you are using in their oral cavity is of the highest quality. Unfortunately, that may not be true. The small diameter and low flow rates of dental unit waterlines (DUWL) can promote bacterial growth, resulting in water at the output that's densely populated with microorganisms.

Research has demonstrated that microbial counts can exceed 200,000 colony-forming units per milliliter within 5 days.¹ In fact, bacteria counts ranging as high as 1,000,000 CFU/mL have been reported.² Unless you take steps specifically designed to prevent and eliminate microorganisms, there is little reason to believe that any dental unit can avoid bacteria colonization.

1. Louis G. DePaola, D.D.S., MS.; Denis Mangan, Ph.D.; Shannon E. Mills, D.D.S.; William Costerton, PhD.; Jean Barbeau, Ph.D.; Brian Shearer, Ph.D.; John Bartlett, M.D. A review of the science regarding dental unit waterlines, ADA, Vol. 133, September 2002, p. 1199.

2. Jean Barbeau, Richard Tanguay, Esther Faucher, Catherine Avezard, Luc Trudel, Ludger Cote, André P. Prévost; Multiparametric Analysis of Waterline Contamination in Dental Units, Applied and environmental Microbiology, November 1996, p. 3954. Copyright 1996, American Society for Microbiology.

ARE YOUR PATIENTS PROTECTED?



microbial counts can reach

> 200,000 (CFU/mL)



WITHIN 5 DAYS

if left untreated

WATER

QUALITY

Guidelines

Guidelines or requirements for dental unit water quality vary by region and are usually specified in colony forming units per milliliter (CFU/mL).

100 CFU/mL UK, EU

200 CFU/mL Australia

500 CFU/mL United States

Follow the most recent recommendations in your location.

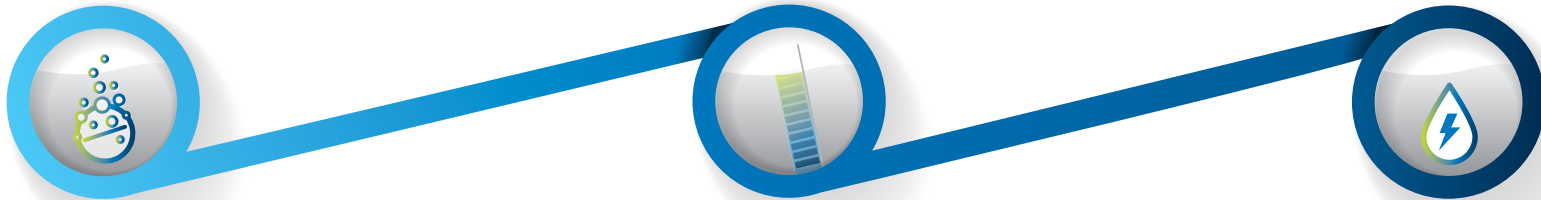
100

200

500

Maintain. Monitor. Shock. **Three steps to clean.**

What can you do to deliver the highest quality water to your patients? Along with a daily waterline maintenance protocol, it's important to monitor water quality and periodically shock the lines to clear deposits and contamination. These three steps help maintain your dental unit waterlines.



1. MAINTAIN

Maintain waterlines daily.

A-dec® ICX® waterline treatment tablets are specially formulated to maintain dental unit waterlines and prevent the accumulation of odor and foul-tasting bacteria, maintaining dental unit waterline effluent of ≤ 10 CFU/mL. It's easy. Just drop a fresh ICX tablet into the empty self-contained water bottle every time you refill. ICX remains active in the system for at least two weeks.

2. MONITOR

Monitor water quality regularly.

Your shock treatment levels will be based on the water quality requirements in your area, and specifically, in your clinic. The frequency of this important step will depend on your test results. Initially, test water once per month. If the results pass your specified action level for three successive months, reduce the testing frequency to once every three months. This test should provide a quantitative measurement of heterotrophic bacteria.

Ask your dealer to recommend a water monitoring test kit or laboratory service to help with this step.

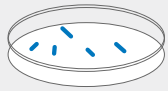
3. SHOCK

Shock waterlines as needed.

When waterline bacteria levels exceed your established water quality action level, it's time to shock. Shock treatment clears deposits and removes odor and foul-tasting bacteria from dental unit waterlines. A-dec recommends shocking the dental unit waterlines with ICXRestore™ before you first use the system. After first use, shock the waterlines whenever test results indicate a bacteria level greater than your water quality action level. Resume using ICX tablets for your ongoing waterline maintenance.

A-DEC RECOMMENDS

performing a shock treatment when dental unit waterline bacteria levels exceed the recommended action level.



If CFU/mL test results are $<$ water quality standards $=$ continue daily maintenance with ICX



A-dec ICX tablets for daily treatments



If CFU/mL test results are $>$ water quality standards $=$ shock your dental waterlines with ICXRestore



A-dec ICXRestore for shock treatments

WHEN YOU SHOCK, LET ICXRESTORE

sit overnight

flush lines

to



CLEAR

A-dec's waterline treatment solution.

Simple. Effective. Affordable.

Maintain ICX Waterline Treatment Tablets

Effervescent ICX tablet does the work for you, so there's no measuring or mixing. Simply add one tablet to an empty self-contained water bottle before each filling. As the tablet dissolves, it releases ingredients into the water that help maintain less than or equal to 10 (CFU/mL), preventing the accumulation of odor and foul-tasting bacteria. ICX continues working in the system with each treatment, protecting the waterlines from further contamination and reducing the need for frequent shock treatments.

The Benefits of ICX

- Maintains dental unit waterline effluent ≤ 10 CFU/mL.
- Reduces build-up of deposits.
- Continuously present in water; provides a preventive, proactive solution.
- Remains active in water for at least two weeks during periods of equipment nonuse.
- Eliminates the need to purge waterlines at night.
- Compatible for use with restorative bonding materials. Will not affect bond strength.
- Gentle on dental equipment.



Available in two sizes.
Sold in boxes of 50.

When used in conjunction with regular testing and adherence to protocols, A-dec ICX and ICXRestore help simplify your waterline maintenance routine. Ready to use and formulated without harsh chemicals, treating dental unit waterlines with ICX products help protect your investment.

Shock ICXRestore Dental Unit Waterline Shock Treatment

Fast-acting liquid shock solution removes odor and foul-tasting bacteria in dental unit waterlines. Just mix the two solutions together into an empty water bottle, run through the lines, and soak overnight. The blue color improves visibility, so you know that the solution is in the waterlines. After completing the shock treatment, flush the lines with water and resume your regular use.

The Benefits of ICXRestore

- Penetrates and removes the build-up of odor and foul-tasting microbial contamination bacteria.
- Blue color lets you know the solution is hard at work in the waterlines.
- Non-corrosive and gentle on equipment.
- Will not corrode or clog waterlines.
- Odorless formula.



Two-part solution.
Nine applications per box.

ICX products are distributed exclusively through A-dec's worldwide authorized dealer network.

Visit a-dec.com or contact your authorized dealer for more information.

MAINTAIN WITH ICX AND ICXRESTORE SOLUTIONS.



A-dec Headquarters

2601 Crestview Drive
Newberg, Oregon 97132 USA
P: 1.800.547.1883 within USA/CA
P: +1.503.538.7478 outside USA/CA
F: +1.503.538.0276
a-dec.com

A-dec Australia

P: 1.800.225.010 within AUS
P: +61.(0)2.8332.4000 outside AUS

A-dec China

P: 400.600.5434 within CN
P: +86.571.89026088 outside CN

A-dec United Kingdom

P: 0800.233285 within UK
P: +44.(0).24.7635.0901 outside UK

Scan to learn more
about ICX and
ICXRestore Products.





DENTAL UNIT WATERLINE
TREATMENT SOLUTIONS
ICX[®] & ICX Renew[®]





Waterline maintenance: Why does it matter?

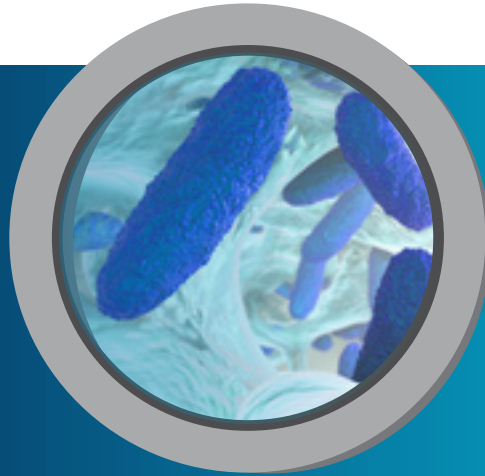
Patients trust that the water you are using in their oral cavity is of the highest quality. Unfortunately, that may not be true. The small diameter and low flow rates of dental unit waterlines (DUWL) can promote bacterial growth, resulting in water at the output that's densely populated with microorganisms.

Research has demonstrated that microbial counts can exceed 200,000 colony-forming units per milliliter within 5 days.¹ In fact, bacteria counts ranging as high as 1,000,000 CFU/mL have been reported.² Unless you take steps specifically designed to prevent and eliminate microorganisms, there is little reason to believe that any dental unit can avoid bacteria colonization.

1. Louis G. DePaola, D.D.S., MS.; Denis Mangan, Ph.D.; Shannon E. Mills, D.D.S.; William Costerton, PhD.; Jean Barbeau, Ph.D.; Brian Shearer, Ph.D.; John Bartlett, M.D. A review of the science regarding dental unit waterlines, ADA, Vol. 133, September 2002, p. 1199.

2. Jean Barbeau, Richard Tanguay, Esther Faucher, Catherine Avezard, Luc Trudel, Ludger Cote, André P. Prévost; Multiparametric Analysis of Waterline Contamination in Dental Units, Applied and environmental Microbiology, November 1996, p. 3954. Copyright 1996, American Society for Microbiology.

ARE YOUR PATIENTS PROTECTED?



microbial counts can reach

> 200,000 (CFU/mL)



WITHIN 5 DAYS

if left untreated

WATER

QUALITY

Guidelines

Guidelines or requirements for dental unit water quality vary by region and are usually specified in colony forming units per milliliter (CFU/mL).

100 CFU/mL UK, EU

200 CFU/mL Australia

500 CFU/mL United States

Follow the most recent recommendations in your location.

100

200

500

Maintain. Monitor. Shock. **Three steps to clean.**

What can you do to deliver the highest quality water to your patients? Along with a daily waterline maintenance protocol, it's important to monitor water quality and periodically shock the lines to clear deposits and contamination. These three steps help maintain your dental unit waterlines.



1. MAINTAIN

Maintain waterlines daily.

A-dec® ICX® waterline treatment tablets are specially formulated to maintain dental unit waterlines and prevent the accumulation of odor and foul-tasting bacteria, maintaining dental unit waterline effluent of ≤ 10 CFU/mL. It's easy. Just drop a fresh ICX tablet into the empty self-contained water bottle every time you refill. ICX remains active in the system for at least two weeks.

2. MONITOR

Monitor water quality regularly.

Your shock treatment levels will be based on the water quality requirements in your area, and specifically, in your clinic. The frequency of this important step will depend on your test results. Initially, test water once per month. If the results pass your specified action level for three successive months, reduce the testing frequency to once every three months. This test should provide a quantitative measurement of heterotrophic bacteria.

Ask your dealer to recommend a water monitoring test kit or laboratory service to help with this step.

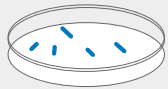
3. SHOCK

Shock waterlines as needed.

When waterline bacteria levels exceed your established water quality action level, it's time to shock. Shock treatment clears deposits and removes odor and foul-tasting bacteria from dental unit waterlines. A-dec recommends shocking the dental unit waterlines with ICX Renew® before you first use the system. After first use, shock the waterlines whenever test results indicate a bacteria level greater than your water quality action level. Resume using ICX tablets for your ongoing waterline maintenance.

A-DEC RECOMMENDS

performing a shock treatment when dental unit waterline bacteria levels exceed the recommended action level.



If CFU/mL test results are $<$ water quality standards $=$ continue daily maintenance with ICX



A-dec ICX tablets for daily treatments



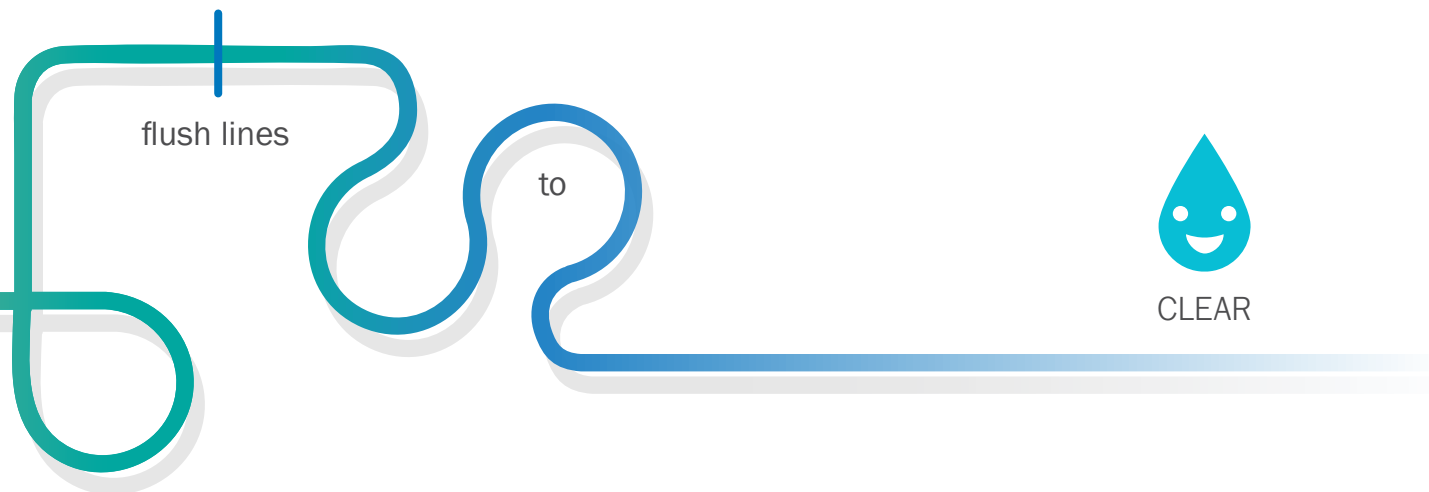
If CFU/mL test results are $>$ water quality standards $=$ shock your dental waterlines with ICX Renew



A-dec ICX Renew for shock treatments

WHEN YOU SHOCK, LET ICX RENEW

sit overnight



A-dec's waterline treatment solution.

Simple. Effective. Affordable.

Maintain ICX Waterline Treatment Tablets

Effervescent ICX tablet does the work for you, so there's no measuring or mixing. Simply add one tablet to an empty self-contained water bottle before each filling. As the tablet dissolves, it releases ingredients into the water that help maintain less than or equal to 10 (CFU/mL), preventing the accumulation of odor and foul-tasting bacteria. ICX continues working in the system with each treatment, protecting the waterlines from further contamination and reducing the need for frequent shock treatments.

The Benefits of ICX

- Maintains dental unit waterline effluent ≤ 10 CFU/mL.
- Reduces build-up of deposits.
- Continuously present in water; provides a preventive, proactive solution.
- Remains active in water for at least two weeks during periods of equipment nonuse.
- Eliminates the need to purge waterlines at night.
- Compatible for use with restorative bonding materials. Will not affect bond strength.
- Gentle on dental equipment.



Available in two sizes.
Sold in boxes of 50.

When used in conjunction with regular testing and adherence to protocols, A-dec ICX and ICX Renew help simplify your waterline maintenance routine. Ready to use and formulated without harsh chemicals, treating dental unit waterlines with ICX products help protect your investment.

Shock

ICX Renew Dental Unit Waterline Shock Treatment

Fast-acting liquid shock solution removes odor and foul-tasting bacteria in dental unit waterlines. Just mix the two solutions together into an empty water bottle, run through the lines, and soak overnight. The blue color improves visibility, so you know that the solution is in the waterlines. After completing the shock treatment, flush the lines with water and resume your regular use.

The Benefits of ICX Renew

- Penetrates and removes the build-up of odor and foul-tasting microbial contamination bacteria.
- Blue color lets you know the solution is hard at work in the waterlines.
- Non-corrosive and gentle on equipment.
- Will not corrode or clog waterlines.
- Odorless formula.



Two-part solution.
Nine applications per box.

ICX products are distributed exclusively through A-dec's worldwide authorized dealer network.

Visit a-dec.com or contact your authorized dealer for more information.

Reliable Creative Solutions

FOR DENTAL PROFESSIONALS WORLDWIDE





Find out more
about ICX and ICX
Renew Products.
a-dec.com/icx




ICX AND ICX RENEW SOLUTIONS



 @A-decDental

 @A-decDental

 @A-dec Inc.

 @AdecDental

 @A-dec Inc.

A-dec Headquarters

2601 Crestview Drive
Newberg, Oregon 97132 USA

P: 1.800.547.1883 within USA/CAN
P: +1.503.538.7478 outside USA/CAN

a-dec.com

Other Locations

A-dec Nashville Experience Center

A-dec Australia


A-dec China

A-dec United Kingdom

Any colors and products shown may vary and are subject to change without notice.
Contact your authorized A-dec dealer for the most current product information.
All trademarks in this document are subject to the trademark rights of A-dec, its
affiliates, and their collective suppliers in the United States and foreign countries.

©2023 A-dec Inc. All rights reserved. 85.0884.00/BB/2.5M/9-22(10-23)/RevA2





With ICX, you have
peace of mind with your
waterline maintenance.



A-dec® ICX

Easy waterline maintenance. No mixing or measuring.

A-dec ICX waterline treatment tablets offer a unique and effective way to maintain clean dental unit waterlines—and it's easy to use since the effervescent ICX tablet does the work for you.* ICX continues working in the system with each treatment, protecting the waterlines from further contamination and reducing the need for frequent shock treatments.

- Simply add one tablet to an empty self-contained water bottle before each filling.
- As the tablet dissolves, it releases ingredients into the water that help maintain less than or equal to 10 colony forming units (CFU) per milliliter.
- ICX prevents the accumulation of odor and foul-tasting bacteria.
- Convenient single-dispensing packets eliminate measuring, mixing and messy solutions. Available for 0.7-liter and 2-liter bottles

To learn more about the A-dec ICX waterline maintenance, contact your local authorized dealer.

A-dec ICX

With ICX, your waterline maintenance protocol is not only easy and effective, but also safe for your investment since the concentration of ingredients in the water remains very low.

Convenient

- Specially formulated effervescent tablets
- Simple single-dose package; drop tablet into an empty self-contained water bottle and fill

Effective residual protection

- Maintains dental unit waterline effluent ≤ 10 CFU/ml
- Eliminates odor and foul-tasting bacteria
- Reduces build-up of deposits
- Continuously present in water system; provides a preventive, proactive (vs. reactive) solution
- Remains in water up to two weeks during periods of equipment non-use
- Eliminates the need to purge waterlines at night
- EPA registered
- Peer-reviewed studies on ICX:*
 - Journal of Clinical Dentistry JCD 2004, Vol. XV, Number 1, pp. 17-21
 - Journal of the American Dental Association, JADA June 2004, Vol. 135, pp. 799-805

Safety**

- Non-corrosive to dental equipment
- No odor or taste
- Includes three primary active ingredients: sodium percarbonate, silver nitrate, and cationic surfactants

Distribution, packaging and use

- Distributed exclusively through A-dec's worldwide authorized dealer network
- Tablets are available for two bottle sizes: 0.7- and 2-liter
- Individually foil-wrapped tablet, packaged 50 per box
- Cost effective; low annual cost
- Approximate usage rates for a single treatment room (one 2-liter or one and a half 0.7-liter bottles per day for a 16-day month):
 - Two months per 50-count box, 0.7-liter tablet
 - Three months per 50-count box, 2-liter tablet

Bonding

- Compatible for use with restorative dental materials; does not affect bond strength
- Clinical study on dentin bonding:*
 - Journal of Clinical Dentistry, JCD 2004, Vol. XV, Number 1, pp. 28-32

Product Description	Bottle Size	Contents	Total Treatments	A-dec Part Number
ICX Tablets	2-liter	1 case containing 36 boxes: 50 tablets per box	1,800 treatments	90.1065.00
ICX Tablets	0.7-liter	1 case containing 36 boxes: 50 tablets per box	1,800 treatments	90.1064.00

To learn more about the A-dec ICX waterline maintenance, contact your local authorized dealer. Visit a-dec.com/ICX or ask your authorized dealer for more information.

* For independent clinical study reprints or additional information, contact A-dec Customer Service at 1.800.547.1883 (1.503.538.7478 worldwide).

** Safety Data Sheet (SDS) are available at a-dec.com.

A-dec, the A-dec logo, A-dec ICX, are trademarks of A-dec Inc. and are registered in the United States and other countries. None of the trademarks or trade names in this document may be reproduced, copied, or manipulated in any manner without the express, written approval of the trademark owner.

© 2022 A-dec Inc. All rights reserved. 85.6093.00/1M/9-22/RevL

A-dec ICX Restore Solution 1 and Solution 2 is a specially formulated dental unit waterline shock treatment. It is intended to remove build-up of contamination from the waterlines. Easy to use and no diluting required. Always use ICX Restore Solution 1 and 2 together. Do not add water. This product is to be used in conjunction with regular testing of dental unit water.

NOTE Do not use with a waterline maintenance cartridge or straw.

DIRECTIONS FOR USE. Always use Solution 1 and 2 together.

Applying ICX Restore to a Dental Unit's Waterlines

1. Turn off the delivery system master toggle; then remove and empty the water bottle.
2. Remove air/water syringe tips, handpieces, detachable motors and couplers, and ultrasonic instruments from their tubing.
3. Add one bottle (118 mL) of ICX Restore Solution 1 and one bottle (118 mL) of ICX Restore Solution 2 into the empty water bottle.
4. Cover the opening of the water bottle and carefully swirl the solution, coating all surfaces of the water bottle.
5. Reattach the water bottle to the unit and turn on the master toggle.
6. Run ICX Restore through the system until the blue solution flows out of the air/water syringe(s), all of the handpiece tubing and the cuspidor's cupfill waterline. Leave remaining solution in the water bottle.
7. Turn off the master toggle and allow the solution to remain in the unit for 12 to 96 hours.

NOTE Place a cloth or paper towel underneath the handpiece tubing to catch potential drips.

8. After 12 to 96 hours, turn on the master toggle and flush remaining ICX Restore solution through all air/water syringe(s), all handpiece tubing, and the cupfill waterline.
9. Turn off the master toggle, remove the water bottle, discard any remaining solution, and thoroughly rinse the bottle with water.
10. Refill the bottle with water, reattach it to the unit; then turn on the master toggle.
11. Completely flush all air/water syringe(s) and all handpiece tubing into a sink or cuspidor, and run the cupfill until the water is clear and the bottle is empty.
12. Once treatment with ICX Restore is completed, add an ICX® tablet to the water bottle and refill it with water.

IMPORTANT. For **new equipment**, apply one treatment before initial use. For **existing equipment**, apply three treatments when your water quality test results exceed your water quality action level. You may use the dental unit between treatments. For proactive preventive maintenance, you may apply one treatment on a routine basis.

SOLUTION 2

WARNING Causes eye irritation.

PRECAUTIONS

IF IN EYES: Rinse cautiously with water for several minutes. Remove contact lenses, if present and easy to do. Continue rinsing. If eye irritation persists: Get medical advice.

STORAGE AND DISPOSAL. Solutions 1 and 2:

Product Storage. Keep the product in the closed original container when not in use. Store in a cool, dry area away from potential sources of heat, open flames, sunlight or other chemicals. Store between 5 °C (41 °F) and 30 °C (86 °F).

Product Disposal. Wastes resulting from the use of this product must be disposed of on site or at an approved waste disposal facility.

Container Handling. Nonrefillable container. Do not reuse or refill this container. Offer container for recycling if available or puncture and dispose of in a sanitary landfill, or by incineration.

Regulatory Information and Warranty: For required regulatory Information and the *A-dec warranty*, see the *Regulatory Information, Specifications, and Warranty* document (p/n 86.0221.00) available in the Resource Center at www.a-dec.com.

A-dec, A-dec 360, the A-dec logo, and ICX Restore are trademarks or registered trademarks of A-dec, Inc. in the U.S. and other countries.



Manufactured for A-dec.

Reorder #: 90.1821.01

L'ensemble de **Solutions ICX Restore 1 et 2 d'A-dec** constitue un traitement de choc spécialement élaboré pour les circuits d'eau des unités dentaires. Il est conçu pour éliminer l'accumulation de résidus dans les circuits d'eau. Simple à utiliser, sans nécessiter de dilution. Toujours utiliser les Solutions ICX Restore 1 et 2 ensemble. Ne pas ajouter d'eau. Ce produit doit être utilisé en conjonction avec une analyse régulière de l'eau de l'unité dentaire.

REMARQUE : ne pas utiliser avec une cartouche d'entretien des circuits d'eau ou une paille.

CONSIGNES D'UTILISATION. Toujours utiliser les Solutions 1 et 2 ensemble.

Appliquer ICX Restore sur les circuits d'eau d'une unité dentaire

1. Désactiver l'interrupteur principal du système d'alimentation, puis retirer et vider la bouteille d'eau.
2. Retirer les embouts des seringues à air/eau, les instruments, les moteurs et adaptateurs détachables et les instruments à ultrasons de leur tube.
3. Ajouter un flacon (118 mL) de la solution ICX Restore 1 et un flacon (118 mL) de la solution ICX Restore 2 dans la bouteille d'eau vide.
4. Couvrir l'ouverture de la bouteille d'eau et remuer légèrement la solution pour la répandre sur toute la surface de la bouteille.
5. Replacer la bouteille d'eau sur l'unité et activer l'interrupteur principal.
6. Diffuser ICX Restore dans le système jusqu'à ce que la solution bleue s'écoule en dehors des seringues à air/eau, de tous les tubes d'instrument et du circuit d'eau du système de remplissage du gobelet du crachoir. Laisser la solution restante dans la bouteille d'eau.
7. Désactiver l'interrupteur principal et laisser agir la solution dans l'unité pendant 12 à 96 heures.

REMARQUE : placer un chiffon ou une serviette en papier sous les tubes des instruments pour recueillir les écoulements éventuels.

8. Après 12 à 96 heures, activer l'interrupteur principal et vider le reste de la solution ICX Restore à travers toutes les seringues à air/eau, tous les tubes d'instrument et le circuit d'eau du système de remplissage de gobelet.
9. Désactiver l'interrupteur principal, retirer la bouteille d'eau, jeter toute solution restante et rincer abondamment la bouteille avec de l'eau.
10. Remplir la bouteille d'eau, la replacer sur l'unité et activer l'interrupteur principal.
11. Rincer entièrement toutes les seringues à air/eau et tous les tubes d'instrument dans un évier ou un crachoir, et faire fonctionner le système de remplissage de gobelet jusqu'à ce que l'eau soit claire et que la bouteille soit vide.
12. À la fin du traitement avec ICX Restore, ajouter un comprimé ICX^{MD} dans la bouteille d'eau et la remplir d'eau.

IMPORTANT. Pour un **nouvel équipement**, appliquer la solution de traitement une fois avant la première utilisation. Pour un **ancien équipement**, appliquer la solution de traitement trois fois si les résultats de l'analyse de la qualité de l'eau dépassent le seuil d'intervention de qualité de l'eau. Vous pouvez utiliser l'unité dentaire entre les traitements. Pour un entretien préventif proactif, vous pouvez appliquer régulièrement un traitement.

SOLUTION 2

AVERTISSEMENT Provoque une irritation des yeux.

PRÉCAUTIONS

EN CAS DE CONTACT AVEC LES YEUX : rincer doucement avec de l'eau pendant plusieurs minutes. Retirer les lentilles de contact, le cas échéant, et si possible. Continuer le rinçage. Si l'irritation des yeux persiste : consulter un médecin.

RANGEMENT ET ÉLIMINATION. Solutions 1 et 2 :

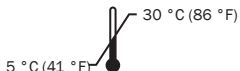
Rangement du produit. Garder le produit dans le conteneur d'origine fermé lorsqu'il n'est pas utilisé. Garder dans un endroit sec et frais à l'écart de sources potentielles de chaleur, de flammes nues, de la lumière du soleil ou d'autres produits chimiques. Conserver entre 5 °C (41 °F) et 30 °C (86 °F).

Élimination du produit. Les déchets résultant de l'utilisation de ce produit doivent être éliminés sur le site ou dans une installation d'élimination des déchets approuvée.

Gestion des conteneurs. Conteneur non rechargeable. Ne pas réutiliser ou remplir plusieurs fois ce conteneur. Envoyer le conteneur au recyclage, le cas échéant, ou le perforer et l'éliminer dans une décharge sanitaire ou par incinération.

Renseignements réglementaires et garantie : pour obtenir les renseignements réglementaires nécessaires et en savoir plus sur la *garantie d'A-dec*, consulter le document sur les renseignements réglementaires, les spécifications et la garantie (réf. 86.0221.00) disponible dans le Centre de ressources sur le site www.a-dec.com.

A-dec, A-dec 360, le logo A-dec et ICX Restore sont des marques commerciales ou des marques déposées d'A-dec, Inc. aux États-Unis et dans d'autres pays.



Fabriqué au nom d'A-dec.

N° de la nouvelle commande : 90.1821.01


reliablecreativesolutions®

 **A-dec Headquarters**

2601 Crestview Drive
Newberg, Oregon 97132
United States
Tel: 1.800.547.1883 within USA/CAN
Tel: +1.503.538.7478 outside USA/CAN
www.a-dec.com



86.0947.00 Rev A
Date of Issue 2021-06-10
Copyright 2021 A-dec, Inc.
All rights reserved