

#whsterilization



video.wh.com

Now at  
your dealer  
or **wh.com**



# SPEEDS YOU UP



**lisa** MINI



## Speed up workflow

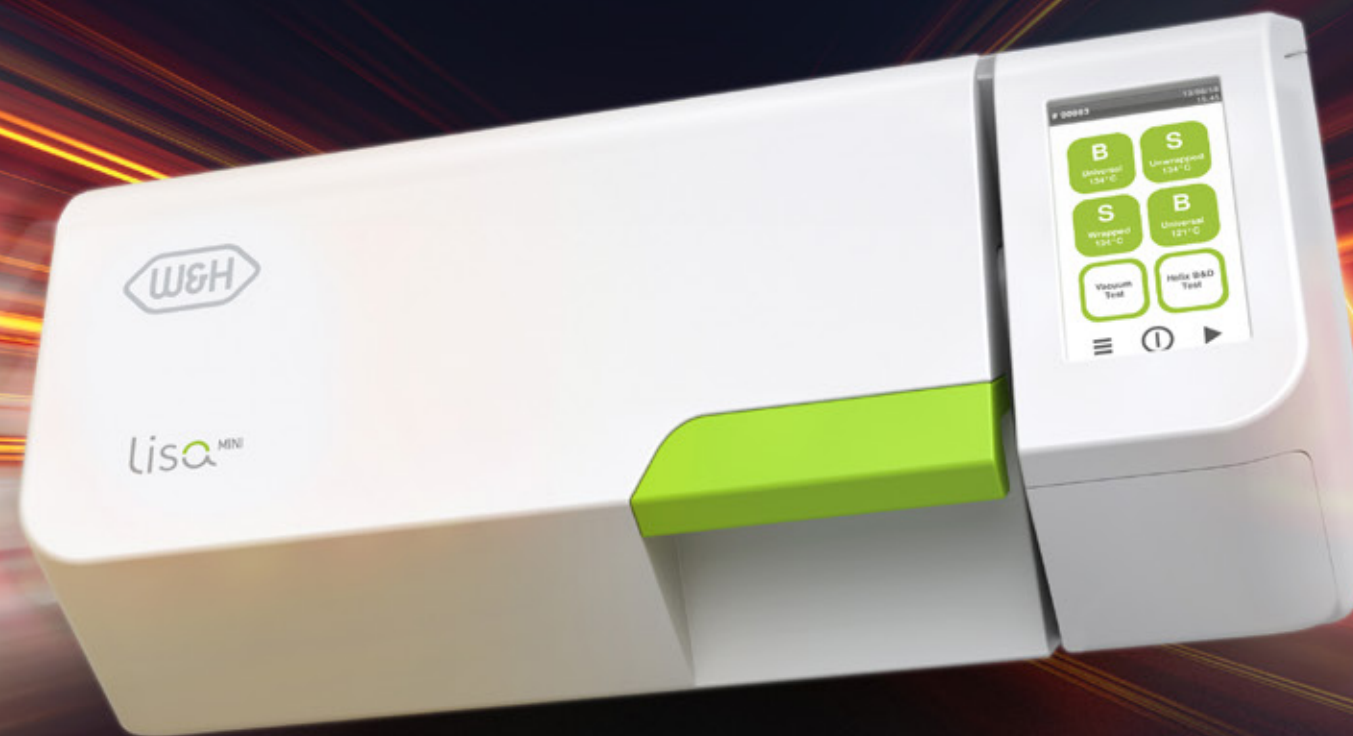
Lisa Mini speeds up your daily workflow. The device impresses with incredible fast cycles and its flexible usability. The compact dimensions guarantee an optimal integration into the reprocessing room. Fully equipped, Lisa Mini also offers the peace of mind of a type B sterilizer such as our Lisa, Lara or Lina sterilizers.

### Super fast

Instrument reprocessing with surprisingly short cycles

### Workflow optimisation

Flexible location options and applications



### Small, but fully equipped

All the features and functionalities of a large type B sterilizer

### Ready for future

Unique connectivity and upgradeability options

### Easy to navigate

Colour touch display and intuitive menu structure



## Speed up cycle times

Choose whatever you need. With Lisa Mini all load types can be sterilized. Thanks to the different cycles, it is possible to reprocess any instrument, wrapped or unwrapped, with extremely short cycle times. In addition, the sterilizer offers one of the fastest type B cycles in its performance class.

### Unbeatable cycle times

Thanks to the optimised cycle profile, wrapped instruments like handpieces can be reprocessed in less than 19 minutes. Unwrapped loads can be reprocessed in less than 10 minutes.

### Reprocessing loads

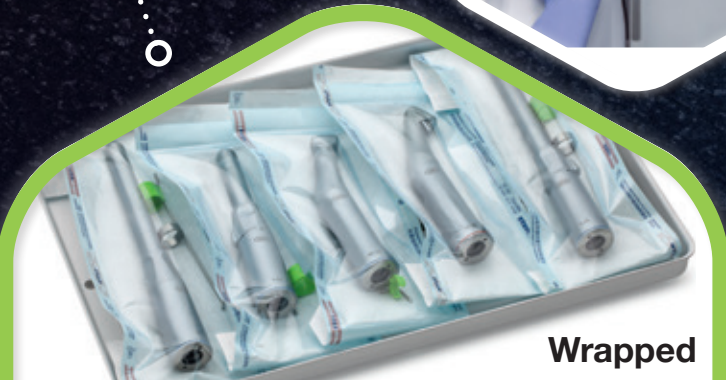


60"  
Wipe  
disinfection  
1 minute

10"  
Lubrication  
10 seconds



17' 45"  
Sterilization  
less than 18  
minutes



Wrapped

8' 45"  
Sterilization  
less than 9  
minutes

Unwrapped



## Speed up flexibility

Take advantage of Lisa Mini's flexibility. Thanks to its small dimensions, Lisa Mini can be easily positioned in the reprocessing room. Moreover, it offers the possibility to stack items on top. Thus, Lisa Mini offers a wide range of applications, e.g., as a complementary device for the fast reprocessing of instruments, e.g. handpieces, and as emergency back-up of tabletop sterilizers.



### High load flexibility

Lisa Mini is available with a chamber size of either 3 litres or 5 litres. With the 3 litre chamber, Lisa Mini can reprocess up to 1 kg of load, which corresponds to up to 15 handpieces. In the 5 litre version, it is 1.5 kg, which corresponds to up to 22 handpieces.

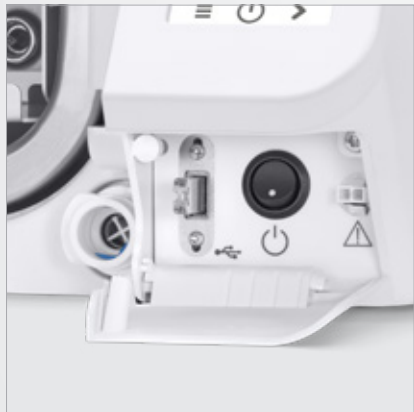
### Even more flexibility

The devices come along with 2 trays, an optional 3-tray accessory is available for even more loading flexibility. Lisa Mini also offers space for two 5-instruments cassettes in the 3 litre version, and four 5-instruments cassettes or two 10-instruments cassettes in the 5 litre version.



# Speed up traceability

The technical expertise makes the difference. The Lisa Mini sterilizer is based on a sophisticated technical concept that offers future-oriented possibilities and significantly simplifies your workflow.



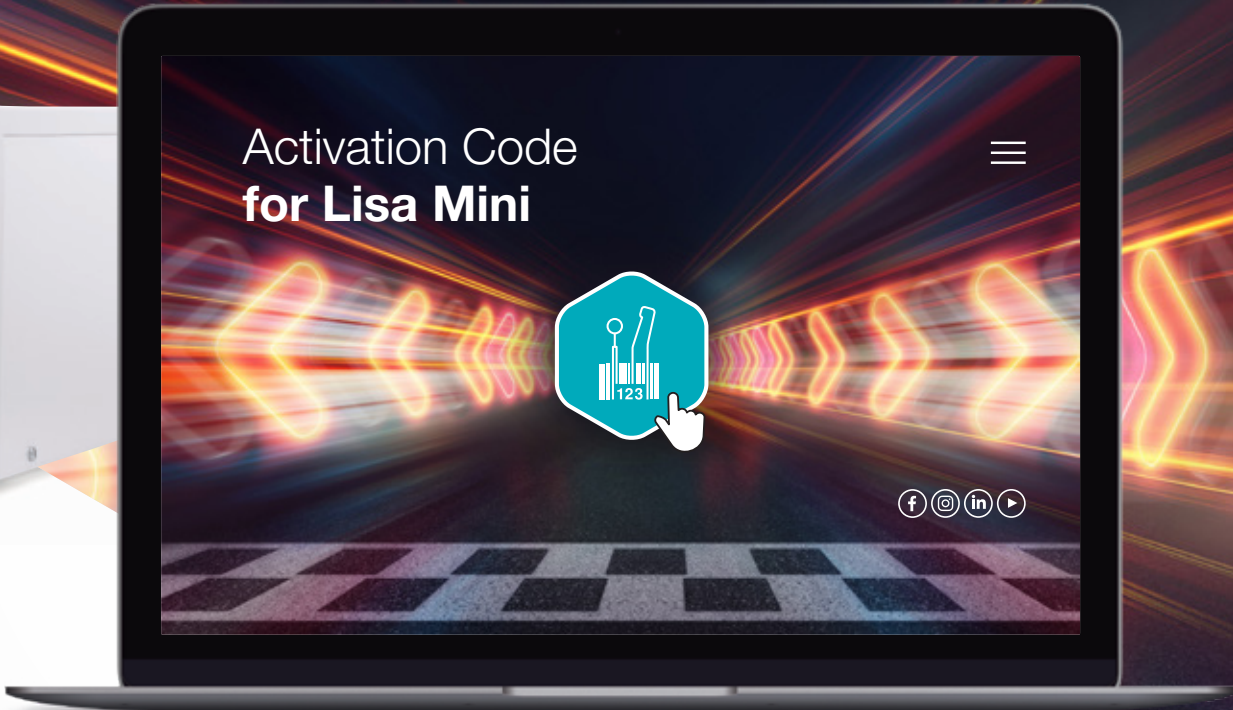
- Enhanced traceability**
- › The documentation is automatically saved via a high-capacity USB stick.
  - › The barcode label printer provides additional support on traceability thanks to the opportunity for linking cycle, sterilization package and patient.
  - › The cycle report printer ensures adequate paper documentation of the cycle.
  - › Wi-Fi and LAN connections offer the possibility to download cycle reports directly to any PC or smart device.



- Advanced connectivity**
- › The ioDent® system offers intelligent dental solutions and enables an advanced service support.
  - › The W&H Steri App allows controlling and remote monitoring of the sterilizer. Moreover, cycle history back-up automatically saved on smartphone ensures extra-safety.

# Speed up with Activation Codes

Needs and requirements may change. Prepare yourself now: With the Activation Code system, additional functions can be activated to meet your changing practice needs and future requirements.



## EliTrace

With the EliTrace feature, the sterilization process can be traced and documented down to the individual instrument or kit. Without any additional software or computer.



## Six steps to your customised sterilizer:

- Step 1**  
Purchase the Activation Code of your choice from your local approved dental supplier.
- Step 2**  
After receiving the related login code, go to **activation.wh.com**
- Step 3**  
Specify this code along with the serial number and model of your sterilizer.
- Step 4**  
Your individual, secure Activation Code is generated.
- Step 5**  
Enter this code in the menu of your sterilizer.
- Step 6**  
The feature is available.

More  
about  
EliTrace





Speed up  
daily tasks

Not only small and fast, but also fully equipped. The Lisa Mini touch screen with intuitive menus offers a wide range of options to meet all your needs. The automatic water filling makes the handling convenient. High-quality components and innovative technology ensure a reduced maintenance.



**Reduced maintenance**  
Quality, reliability and reduced maintenance are convincing arguments. The maintenance interval of the Lisa Mini sterilizer is 4,000 cycles or 5 years thanks to high-quality components.



**Simple cycle selection**

As soon as the Lisa Mini is switched on, the home screen immediately displays the cycle selection.

**Risk-free cycle selection**

Thanks to the possibility of customising the start screen with only the sterilization cycles used, daily activities are simplified.

**User guidance**

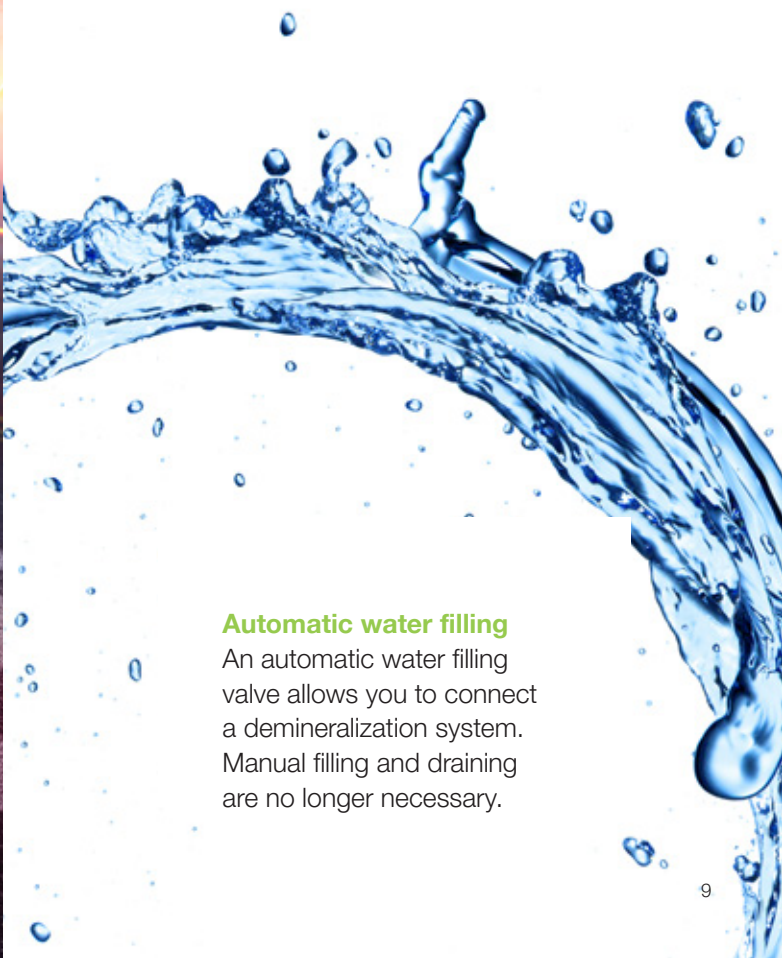
Instruction is available with the help button in order to assist you during navigation.

**Guided maintenance**

A set of 3-D animations shows you the main maintenance operations step by step. This makes operation easy and straightforward.



**Easy filling**  
An integrated funnel prevents water splashes during the filling process.



**Automatic water filling**  
An automatic water filling valve allows you to connect a demineralization system. Manual filling and draining are no longer necessary.



## Appropriate accessories

### 1 Barcode scanner

The scanner enables you to scan labels into patient files.

### 2 Sprint

Print out cycle protocols on thermal paper with 10-year paper guarantee.

### 3 Helix test

The Helix test ensures optimum process control for type B sterilizers. The QR code on the test strips enables full traceability and easy use with eLog, the digital logbook.

### 4 Barcode label printer

The label printer can be connected to the sterilizer to print barcodes. In combination with the integrated data logger, it improves your traceability system. The label printer is a quick and easy tool to link the sterilization cycle with patient files.

### 5 Multidem

Multidem supplies demineralized water for steam generation and can be used for many conventional sterilizers and processing units. As a result, it ensures consistent and optimised performance, thereby extending the service life of your sterilizer.

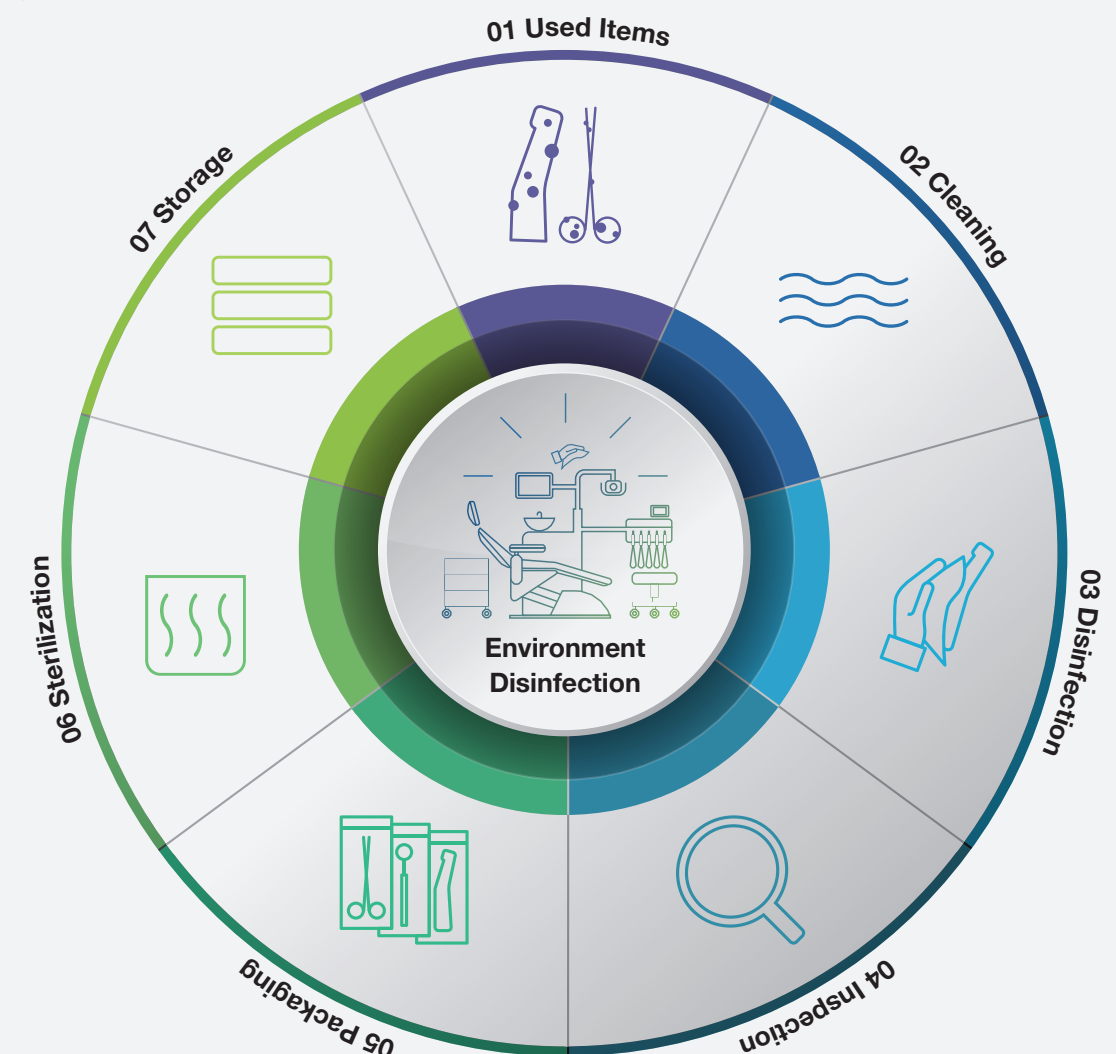
Attention: Not all products mentioned in this brochure are available in all countries. Please contact your local W&H representative for details.

## W&H AIMS Safety first!

**aims** Advanced  
Infection Prevention  
Management Solutions

Hygiene is extremely important in the dental practice. W&H AIMS is here to help: with a wide product portfolio, fundamental knowledge and all relevant information at a glance.

For your safety and the safety of your patients. **aims.wh.com**



Decontamination



Cleaning



Disinfection



Inspection & Maintenance



Packaging



Sterilization



Traceability & Storage

# Technical data

Sterilization cycle:		B Universal 134	B Prion 134	B Universal 121	S Wrapped 134	S Unwrapped
Temperature:		134°C	134°C	121°C	134°C	134°C
Holding time (minutes):		4'	18' 30"	20' 30"	4'	3' 30"
Total cycle duration (minutes) including drying:	3I <sup>(1)</sup>	19' 45"–23' 45"	34' 15"–38' 15"	37' 15"–38' 45"	17' 45"–19' 30"	8' 45"–10' 30"
	5I <sup>(1)</sup>	21' 45"–29' 15"	36' 15"–43' 45"	38' 15"–45' 15"	18' 45"–22' 45"	9' 45"–13' 45"
	5I <sup>(2)</sup>	23' 45"–31' 15"	38' 15"–45' 45"	39' 45"–46' 45"	20' 45"–24' 45"	10' 15"–14' 15"
Load type:		All types of load <sup>(3)</sup>			Solid items, Simple hollow items (Hollow B), Specific load: dental load, medical load <sup>(4)</sup> and handpieces	
Max. load:		Wrapped and unwrapped items: 1 kg (3 litre)/1.5 kg (5 litre)				Unwrapped items: 1 kg (3 litre)/1.5 kg (5 litre)
		Wrapped and unwrapped porous/textile: 100 g				
Test cycles:		Helix/Bowie and Dick/Vacuum				
Item supplied with 2 aluminium trays, drain hose, tray holder, 8 GB USB stick, door opening tool, factory test, compressed air tube <sup>(1)</sup> .						

<sup>(1)</sup> Compressed air, <sup>(2)</sup> Vacuum pump, <sup>(3)</sup> Excluded liquid

<sup>(4)</sup> Dental load according to ISO 17665-3; for medical load is intended to load up to grade 7 steam penetration according to ISO 17665-3.



Trade name:	Lisa Mini	
Type:	RIS-303	
Chamber size:	3 litres	5 litres
Power supply:	200–240 V AC; 50/60 Hz; 10 A single phase 100–125 V AC; 50/60 Hz; 12 A single phase	200–240 V AC; 50/60 Hz; 10 A single phase
Power consumption:	2–2.4 kW (220 V)/1.2–1.5 kW (110 V)	
Overall dimension (w × h × d):	440 mm × 200 mm × 581 mm	440 mm × 200 mm × 666 mm
Weight:	21.9 kg	24.4 kg
Main/used water tanks:	1.6 l/0.6 l	2.5 l/0.6 l
Working range:	3 to 7 cycles	
Average air consumption:	50–60 (Nl)/min (13.2–15.8 (N)gal/min)	
Working pressure:	5–10 bar (73–145 psi)	
Connection types:	5 USB ports, 1 Ethernet port, automatic water filling kit	

## Lisa Mini sterilizers were designed, certified and validated with the most stringent directives and standards:

2017/745 Medical Device Regulation	IEC 61326-1 Electromagnetic compatibility	IEC 61770 Electric appliances connected to the water mains
2012/19/EU Waste Electrical and Electronic Equipment	IEC 61010-1 Safety requirements	EN 13060 Small steam sterilizers
2014/68/EU Pressure Equipment Directive	IEC 61010-2-040 Specific requirements for steam sterilizer	› The sterilizer can be validated according to EN ISO 17665-1

## Manufacturer:

**W&H Sterilization Srl.**  
Via Bolgara, 2  
24060 Brusaporto (BG), Italy  
t +39 035-66 63 000  
f +39 035-50 96 988  
office.sterilization@wh.com  
wh.com

Pictures are for illustrative purposes only. Additional equipment and accessories shown are not included as standard.

20578 AEN Rev. 001 / 06.11.2024  
Subject to alterations